



Mark II

NET INTEGRATOR

Value, reliability,
and connectivity for
small businesses and
branch offices.



A Nitix™ powered Net Integrator Mark II server delivers an exceptional combination of reliability, security and flexibility for small to medium enterprises that need unprecedented levels of performance. The unique features of the Nitix Operating System make the Mark II extremely easy to deploy, service, and remotely manage, helping to lower total cost of ownership.

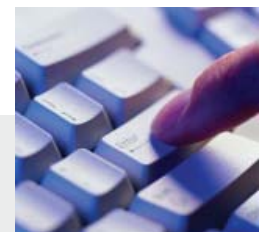
Nitix-powered Mark II server:

Features:

- Email and Web services
- File and print services
- File storage
- Continuous, automated, unattended backup
- Real-time recoverability
- RAID 1 or RAID 5 redundancy (Software RAID)
- Remote Access Server
- Router/Gateway
- Firewall & Virtual Private Network server
- Redundant Internet connectivity
- Windows®/Mac®/Linux® support
- Convertible chassis, available in tower or rackmount format

Benefits:

- Connect to the Internet and your network resources
- Manage email, meetings, and calendars
- Give your mobile workers seamless access to network resources
- Reduce downtime
- Protect your valuable data
- Add users and computers quickly and effortlessly
- Connect offices instantly
- Host your own website and email
- Administer and manage your network easily
- Lower your total IT infrastructure costs



Recommended For:

- Small and mid-size businesses
- Branch offices and departments
- Media and design companies with large data storage needs
- Educational



Mark II

NET INTEGRATOR



Hardware	<ul style="list-style-type: none"> - Minimum AMD Athlon™ 64 4200+ dual-core processor - 1 GB DDR2 SDRAM (4 GB max) - 3 x 250 GB removable Serial ATA hard drives supporting: <ul style="list-style-type: none"> - RAID 1 (mirrored) or - RAID 5 (multi-disk array) - Software RAID - 2 x 10/100/1000 Ethernet port and 1 x 10/100 Ethernet ports 	<ul style="list-style-type: none"> - Hot swappable Intelligent Disk Backup (idb) drive - Parallel port for printer support - USB 2.0 ports for printer support - Serial DB9 interface for external analog modem or UPS - LCD panel for easy setup and control - 400W power supply with power factor correction
Software	- The Mark II is designed to run the Nitix Operating System	
Physical	<ul style="list-style-type: none"> - Tower or 5U rackmount server chassis - Dimensions: 24.0 x 16.5 x 8.5 inches - Shipping weight: approx: 75 pounds - Power requirements: 100V-240V / 8A-4A, 50Hz-60Hz - Operating environment: 5° to 35° C (41° to 95° F); 10% to 90% humidity (non-condensing) 	<ul style="list-style-type: none"> - Non-operating environment: -10° to 50° C (14° to 122° F); 10% to 90% humidity (non-condensing) - LED: Ethernet Activity, System Error, Power, Boot Activity - LCD: Status Display
Maintenance	- One year express hardware replacement	
Regulatory Approvals	<ul style="list-style-type: none"> - FCC Part 15 Class A - EN 55022 Class A - EN 55024 	<ul style="list-style-type: none"> - UL 60950 (2000) - CSA C22.2 No. 60950-00
Internet Access	<ul style="list-style-type: none"> - Analog dial-up modem, cable modem, DSL (including PPPoE support) - Other types of connections are supported through an 	<ul style="list-style-type: none"> - Ethernet connection to any standard IP router - Internet connectivity requires Internet service (not included)
Options	<ul style="list-style-type: none"> - Optional fourth hard drive (for idb with RAID 5) - Additional idb disk cartridges - CPU upgrade to AMD Athlon™ 64 x2 5000+ - Anti-virus and anti-spam protection 	<ul style="list-style-type: none"> - Rackmount Rail kit - One and two year hardware warranty extensions (at time of purchase only)

For more information on options/upgrades, please review the pricelist.

About Net Integration Technologies Inc.

Net Integration provides easy-to-use and affordable networking infrastructure for small businesses. Serving the needs of those with little or no in-house IT expertise, Net Integration enables businesses to quickly get up and running, and focus on business, rather than worry about IT. With highly reliable automated data back-up and disaster recovery solutions, Net Integration protects customers from inadvertent loss of critical data.

Based on robust Linux technology, Net Integration's self-managing operating system, Nitix, has over 11,000 installations worldwide, and does not require Linux-specific knowledge. Net Integration has an extensive global network of resellers and strategic partnerships with IBM, NTT, Ricoh, and Sage Software.

Contact your Net Integration Technologies Approved Partner:



THE IT PRO INC.
50 Anderson Ave.
Markham, ON L6E 1A6
905-209-9725
info@theitpro.ca



Net Integration Technologies Inc.

7300 Warden Avenue, Suite 203
Markham, Ontario
Canada L3R 9Z6
Web: www.nitix.com

Toll-free: 866.384.8324
Phone: 905.946.1777
Fax: 905.946.2468
Email: sales@nitix.com